

Runyes® Digital Imaging System



**The component nameplate
of the X-Ray Source**

Type of X-Ray Tube: KL1-0.8-70
Rated High Voltage: 70KV
Tube-Head Current: 7mA
Total Filtration: 2.1mm Al
Inherent Filtration: 0.5mm Al
Focus: 0.8mm (IEC 336)

Runyes® Digital Imaging System



**Clear Image,
Accurate Diagnose!**

Runyes®
FOCUS ON DENTAL

Ningbo Runyes Medical Instrument Co.,Ltd.

Add:No. 456, Tonghui Road, Jiangbei Investment & Pioneering Park C, Ningbo
Tel:+86-574-27709922 Fax:+86-574-27709923
Http://www.runyes.com E-mail:runyes@runyes.com

Perfect your clinic!

Version:201501
All Rights Reserved

Runyes®
FOCUS ON DENTAL

The smallest focus (0.8mm) in the tube-head makes the images clearer and reduces the X-ray dose by 16-20 times compared with any other products in domestic market.



Runyes® Digital Imaging System

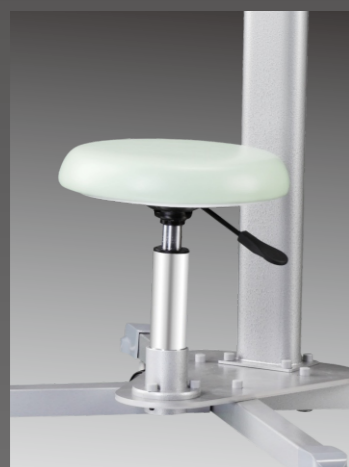
◆ Products Performance

Runyes Intra X-ray Unit provides increased treatment workflow. The control box is placed conveniently at the x-ray unit, allowing a clear and well-organized working environment without interfering cables. Multi-function timer, easy-operational handset and fashion design, create your work in an easy way.

Our advantages:

- Streamlined and efficient production lines
- Focus on quality control and modern design
- Slim organization with young and talented staff
- Efficient Customer Relationship Management





Mobile X-Ray Unit RAY68(M)-B

Fashion Design
Stable base
Strong column
Stretchable arm
Multi-function timer
Easy-operational handset

Specification

Power Voltage: AC220 \pm 10%
Frequency: 50/60Hz
Electric plug: Three-core (International / European standard)
Ultimate Capacity: 900VA
Electric Current: 4A
Fuse: 6.3A
Focus: 0.8mm
Rated High Voltage: 70KV \pm 10%
Tube-Head Current: 7mA \pm 15%
Anode Angle: 19°
Load Cycle: 1/60
Half Value Layer: 1.6mmAL under 70KV
Inherent Filtration: \geq 2.1mm AL
Radiation Leakage: < 0.07mGy/h
Exposure Time: 0.06-2.00s



Mobile X-Ray Unit RAY68(M)-D

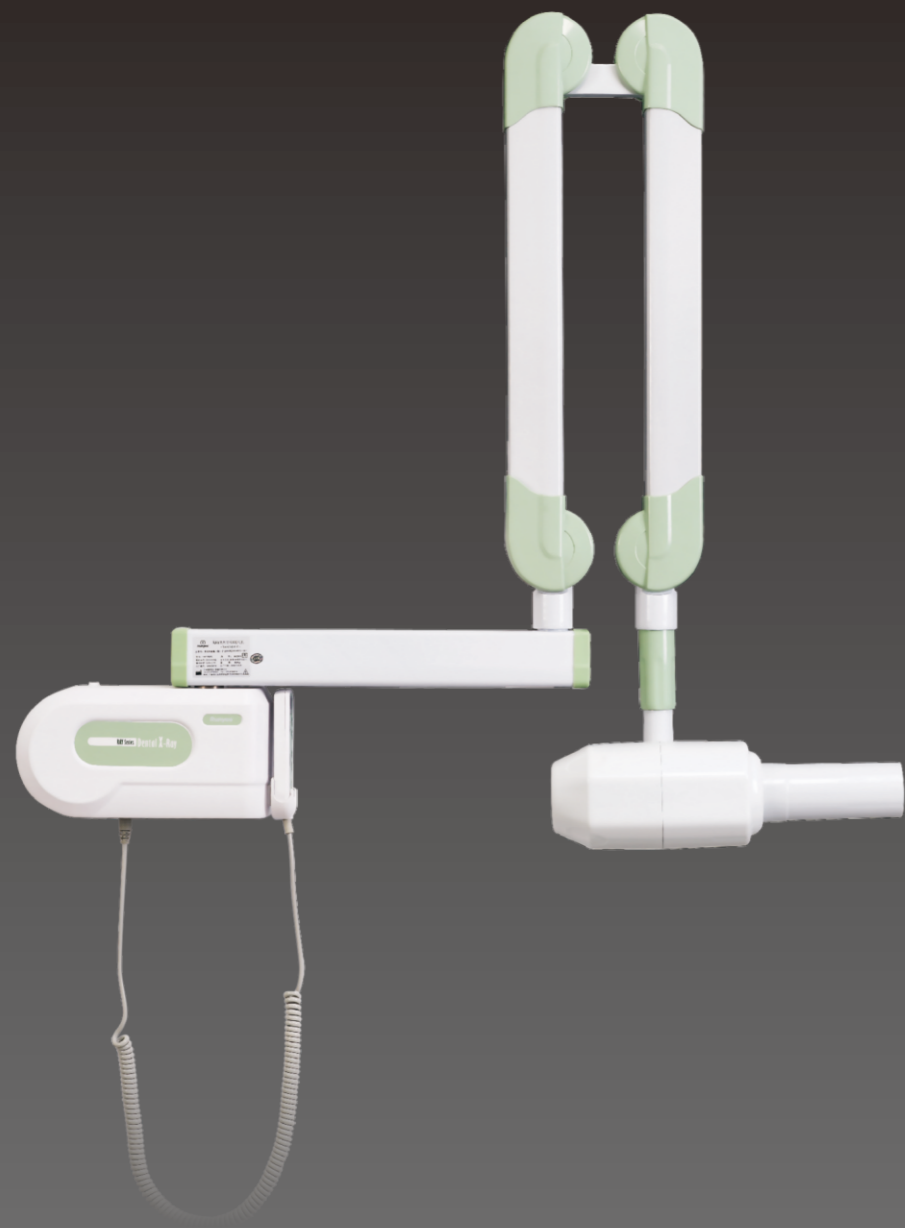
Fashion Design
Finger control
Free movement
Precise positioning
Multi-function timer
Easy-operational handset

Specification

Power Voltage: AC220 \pm 10%
Frequency: 50/60Hz
Electric plug: Three-core (International / European standard)
Ultimate Capacity: 900VA
Electric Current: 4A
Fuse: 6.3A
Focus: 0.8mm
Rated High Voltage: 70KV \pm 10%
Tube-Head Current: 7mA \pm 15%
Anode Angle: 19°
Load Cycle: 1/60
Half Value Layer: 1.6mmAL under 70KV
Inherent Filtration: \geq 2.1mm AL
Radiation Leakage: < 0.07mGy/h
Exposure Time: 0.06-2.00s



Runyes® Digital Imaging System



Wall-Mounted X-Ray Unit RAY68(W)

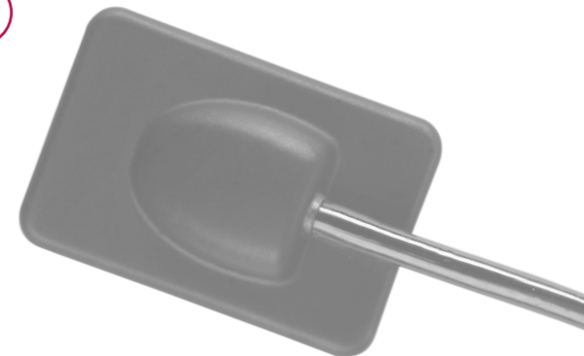
Fashion Design
Finger control
Free movement
Precise positioning
Multi-function timer
Easy-operational handset

Specification

Power Voltage: AC220 ± 10%
Frequency: 50/60Hz
Electric plug: Three-core (International / European standard)
Ultimate Capacity: 900VA
Electric Current: 4A
Fuse: 6.3A
Focus: 0.8mm
Rated High Voltage: 70KV ± 10%
Tube-Head Current: 7mA ± 15%
Anode Angle: 19°
Load Cycle: 1/60
Half Value Layer: 1.6mmAL under 70KV
Inherent Filtration: ≥2.1mm AL
Radiation Leakage: < 0.07mGy/h
Exposure Time: 0.06-2.00s
Length of Horizontal arm: 475mm, 700mm

Runyes Oral Digital Image System

DS730 (plate)



Imported from Europe, adopted with international advanced APS sensor.
Without data box. Connect with USB2.0 directly.
Built-in image transferring chip. No need for PLC(Program Logic Controller), more convenient and easy.
Water level: Ip67. Cable length: 3m(polyurethane material, it could be extended to 18m at most)
Size: 37.0x24.5x5.5mm
Induction area: 30x20mm(600mm²)
Induction pixel: 3,200,000 pixel
Pixel size: 19x19um
Resolution ratio: >20 line pair/mm
Gray level: 12 bit
Sensor's life expectancy: >100000 times
Bend times of Connecting line: >50000 times
Preventing with accidental fall(15 times at most at 1m place) Please avoid falls as possible as you can.
Image capture time: 3 seconds.
English operating software
Free to update to international version

International advanced technology.
Transfer signal by USB directly,
so no need for control box to transit.



CMR™ Oral Camera

◎ CMR-01



Specification

Power	5V±0.5V (1500mA)
Image sensor	1/4" sony HAD CCD
Effective Pixels& High Resolution	PAL : 752(H) x 582(L) (470K Pixel) NTSC : 768(H) x 494(L) (410K Pixel)
Illumination	6XLEDs
Handle Weight	0.036kg
Handle Lead	200mm
Focus range	3mm-40mm
Image orientation	foot board HM button
Mode	Mode set function - it can be
Interface	Mode set function - it can be



F-V2 F-V3

Film Developer

Specification

Power supply for the control: 3 pieces 7# battery
Weight: 2.75kgs
Outsize: 421 X 265 X 272 mm
Material: ABS
Accessories: Material cup 4pcs, Film clamp 4pcs

Specialty:

With advanced injection molding technique,
the product has excellent corrosion resistance
and high strength. Light carry, easy move.
Micro-control mode, accurately control developing,
fixing and bathing.
Small occupation, lower cost
Nice design